

REDUCE WASTEFUL WALKING, AND IMPROVE PROCESS AND ERGONOMIC EFFICIENCY ON YOUR NEXT WORKPLACE DESIGN PROJECT.

Workplace Planner was created for engineers who often design workplaces, where one or more operators are required to walk around and interact with parts, products, machines and each other. Unlike manual workstation analyses with paper and pen, the Workplace Planner makes quick and easy work of generating accurate walk path diagrams, calculating model and option specific workplace cycle times, evaluating LEAN work content, and/or certifying workplace ergonomic safety. Designed by industrial engineers, for engineers, Workplace Planner provides a quick and simple way to diagram and quantify the flow of people and products within a workplace drawn in AutoCAD. Since it is hard to reduce or eliminate what you can't see, Workplace Planner helps you visualize the flow and animate the work content. This visual analysis will be an invaluable tool in your process improvement team's arsenal against waste.

INTEGRATE DATA FROM AUTOCAD AND MS EXCEL FOR EFFICIENT WORKPLACE DESIGN.

Working within AutoCAD, the Workplace Planner diagrams and quantifies operator movement within the workplace based upon a task routing entered into the application, or imported from MS Excel. Incorporating predetermined process languages from MTM/MODAPTS/MOST, as well as process times specified in decimal minutes or seconds, with AutoCAD-based walk distances into one calculator makes it possible to consider many more alternatives. When integrated with Proplanner's line balancing application, the Workplace Planner can even evaluate, and animate, an entire assembly line utilizing machine and/or operator synchronized tasks and mixed model/option sequenced production.



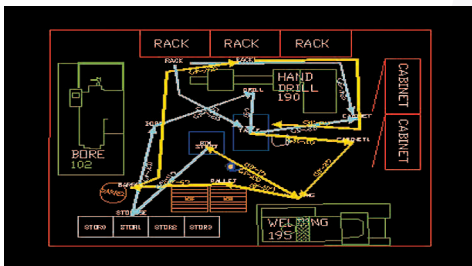
3D view of 2-operator assembly line workplace animation involving moving products.

Proplanner was founded by Dr. David Sly, a world renowned expert in Process and Plant Engineering systems that extend and integrate the capabilities of current applications such as AutoCAD and Excel. Since Dr. Sly invented the first CAD-based material flow analysis application 20 years ago (a predecessor to Flow Planner), he has created a suite of powerful and integrated applications for Time Estimation, Process Management, Ergonomics Assessment, Line Balancing, and Workplace Design.

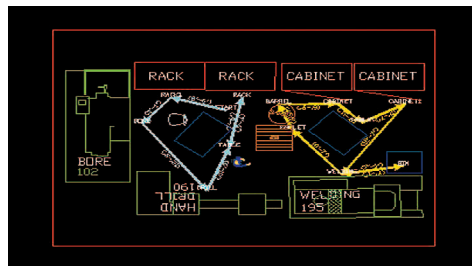
INSTANTLY VISUALIZE AND QUANTIFY WORKPLACE CHANGES.

- Increased Valued Added work content and reduced TAKT time by 13.07 seconds (nearly 10%).
- Reduced average operator walk distance by 16.6 feet which saved 2 hours of daily manpower.
- Accelerated layout changes and evaluation which reduced design time from days to hours.

Before



After



55% MORE LEAN · 45% LESS WALKING · 62% LESS LABOR COST

INFORMATION: 1-515-296-9914 • INFO@PROPLANNER.COM • WWW.PROPLANNER.COM

3-STEP PROCESS

USING THE WORKPLACE PLANNER ON YOUR NEXT WORKSTATION DESIGN IS AS SIMPLE AS 1, 2, 3.

1. Begin by creating a spreadsheet file of the sequential tasks performed by each person and/or machine within the workplace. Identify the time to perform the tasks (either in minutes/seconds or using MTM/MODAPTS/MOST) and their location within the workplace.

2. Open your layout drawing in AutoCAD and place TEXT labels (when prompted) in your drawing to identify the LOCATIONS specified in step 1. Also, specify the path that the PRODUCT takes down the assembly line (if applicable), in addition to the AutoCAD blocks to use for animating the OPERATORS and PRODUCTS.

3. Select the CALC button in the Workplace Planner and watch it automatically draw the operator flow diagrams between your LOCATIONS and to your PRODUCTS. FLOW lines will be color coded and scaled in thickness according to the frequency of travel. In addition, reports, charts and animations will be created that show the Operation Process Details, LEAN Work Content, Ergonomic Safety Issues and step-by-step OPERATOR/ PRODUCT placements.

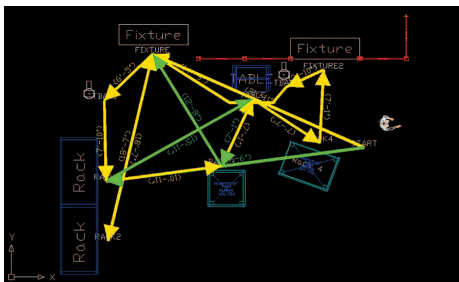
IF YOU HAVE A SPREADSHEET OF OPERATOR AND MACHINE TASKS, AS WELL AS AN AUTOCAD DRAWING OF YOUR WORKPLACE, THEN YOU ARE LESS THAN 1 HOUR FROM A FULL-COLOR, INTERACTIVE CAD-BASED WORKSTATION ASSESSMENT.



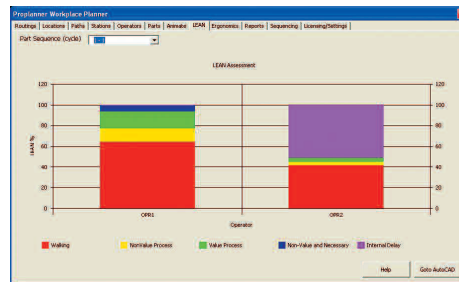
THE QUICKEST, EASIEST AND MOST ACCURATE WAY TO DESIGN WORKSTATIONS.

The Workplace Planner takes the hassle out of diagramming operator walk paths, calculating station cycle times and walk distances, determining LEAN work content, and evaluating ergonomic lift and carry issues.

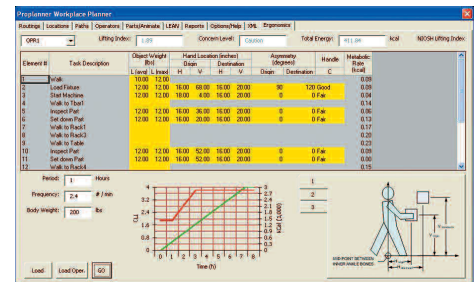
WORKPLACE PLANNER			
FUNCTION	FULL VERSION	BASIC VERSION	FREE TRIAL
Operator Path Direction Arrows	X	X	X
Line Thickness Shows Frequency	X	X	X
Operator Path Color Legend	X	X	X
LEAN (Value Add) Charting	X	X	X
User Defined Walk Paths	X	X	X
2 Operator Speeds (Loaded/Unloaded)	X	X	X
Spreadsheet Interface	X	X	X
Man/Machine and Man/Man Delay	X		
Operator Cycle Time Reports	X	X	X
Support for Work on Moving Parts	X		
Support for Line Balance Scenarios	X		
MTM/MOST/Modapts Support	X		
Animation of Operation in AutoCAD	X		
Ergonomics Analysis (Garg/NIOSH)	X		
Save Input and Results	X	X	
Max Number of Stations	UNLIMITED	4	2
Max Number of Operators	UNLIMITED	4	2
Max Number of Tasks	UNLIMITED	100	50
Cut, Copy, and Paste Data	X	X	X
Product Updates & Phone Support	\$750/Year	\$125/Hour	
Email Support	X	X	X
Web Training	\$125/Hour	\$125/Hour	
AutoCAD Engine	\$600	\$600	NOT AVAILABLE
	\$5,000	\$495	FREE



Walkpath Diagram



LEAN Chart



Ergonomic Analysis



MAILING ADDRESS: 2500 NORTH LOOP DRIVE | AMES, IA 50010

INFORMATION: 1-515-296-9914 * INFO@PROPLANNER.COM * WWW.PROPLANNER.COM